

INSTRUCTIONS

BRITA® Classic filter cartridge

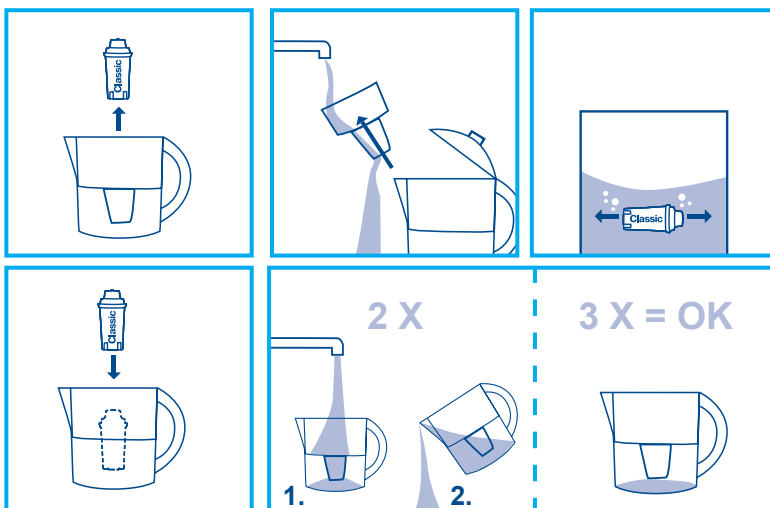


BRITA CLASSIC filter cartridges fit in all BRITA CLASSIC jugs and kettles as well as in domestic appliances made by our BRITA partners. Please look for the CLASSIC cartridge symbol in your instruction manual.



4-step filtration

- 1. Intensive pre-filtration:**
The water flows through a fine mesh filter.
- 2. Ion exchange filtration:**
The ion exchange resin reduces limescale (carbonate hardness) and certain heavy metals (like lead and copper).
- 3. Activated carbon filtration:**
The activated carbon significantly reduces substances that affect smell and taste such as chlorine, organic impurities and certain pesticides.
- 4. Intensive final filtration:**
The special fine mesh filter retains particle mixture.



1. Fill your jug or a bowl with water.
2. Immerse your cartridge in the water and shake vigorously from side to side for about 1 minute to remove all air bubbles.
3. Insert the cartridge firmly in your funnel until it clicks into place.
4. Filter and discard the first two litres of filtered water. Your filter is now ready to use.

BRITA cartridges can be kept for 4 years, if they are stored properly:

- Temperatures between 1°C and 50°C.
- No direct sunlight.
- No exposure to radiation.
- The cartridges must be kept in the original sealed packaging.

BRITA Quality Guarantee

BRITA filter cartridges are steam sterilised, conform to the highest quality standards and are rigorously controlled. Certified as food grade quality.

Change of cartridge regularly in every 4 weeks.